

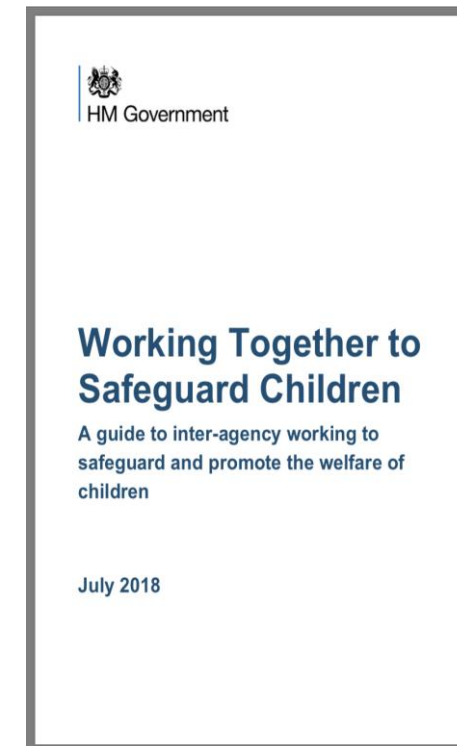
Safeguarding Partnership Arrangements

5th June 2019

Partnerships

- The Children and Social Work Act 2017 and Working Together, 2018,

“the police, clinical commissioning groups and the local authority are under a duty to make arrangements to work together, and with other partners locally, to safeguard and promote the welfare of all children in their area”



From LSCB to HSCP

- A move from the Local Safeguarding Children Board to The Haringey Safeguarding Children Partnership
 - Agree on ways to co-ordinate their safeguarding services;
 - Act as a strategic leadership group in supporting and engaging others; and
 - Implement local and national learning incl. serious child safeguarding incidents



Key Differences

LSCB	HSCP
Accountability - LSCB Independent Chair to the Local Authority Chief Executive	Three equal Partners, Local Authority, CCG and Police (delegated to DCS, CCO and BC)
LSCB Independent Chair	Independent Person and Independent Scrutineer
Serious Case reviews	Two-tiers National and Local Child Safeguarding Practice Review
National Standardised approach to LSCBs – Working Together 2015	Local Innovation to safeguarding arrangements - Working Together 2018
Local Child Death Overview Reviews	Sub regional Child Death Reviews
Large scale partnership	Desire to move to a more agile structure

Responsibility

Statutory responsibility	Delegated responsibility
Zina Etheridge (CEO for Haringey Council)	Ann Graham (Director of Children Services)
Helen Paterson (CEO for Clinical Commissioning Group)	Tony Hoolaghan, (Chief Operating Officer for Haringey & Islington)
Treena Fleming (Chief Superintendent Enfield & Haringey)	Tony Kelly (Detective Superintendent Enfield & Haringey)

Statutory Guidance

- New arrangements must meet a set of requirements set out in Working Together 2018.
- Safeguarding arrangements must be **published by 29th June 2019 and implemented by Sept 2019**
- The safeguarding arrangements will be sent to the **DfE**, the Child Safeguarding Practice Review Panel and the **What Works Centre for Children's Social Care within seven days** of being published.
- **Relevant Agencies** are those organisations and agencies whose involvement the safeguarding partners consider is required to safeguard and promote the welfare of local children. The list must be published and is expected to change over time.

HSCP vision

The partnership will provide the strategic leadership, vision and influence which ensures:

- that at every opportunity the lived experience of children and young people (CYP) is integral to how we safeguard and protect;
- there are improved outcomes through strengthening partnership workforce and community resilience; and
- our relationship-based practice is strengthened, demonstrating continuous improvement

Independent Chair and Independent Scrutineer

- Our arrangements will apply to Haringey only
- Independent Chair
- A range of options for Independent Scrutiny – to provide assurance in judging the effectiveness of the arrangements and for the arrangements to identify and review serious practice reviews
- A review of arrangements by September 2020.

The Model – to improve practice

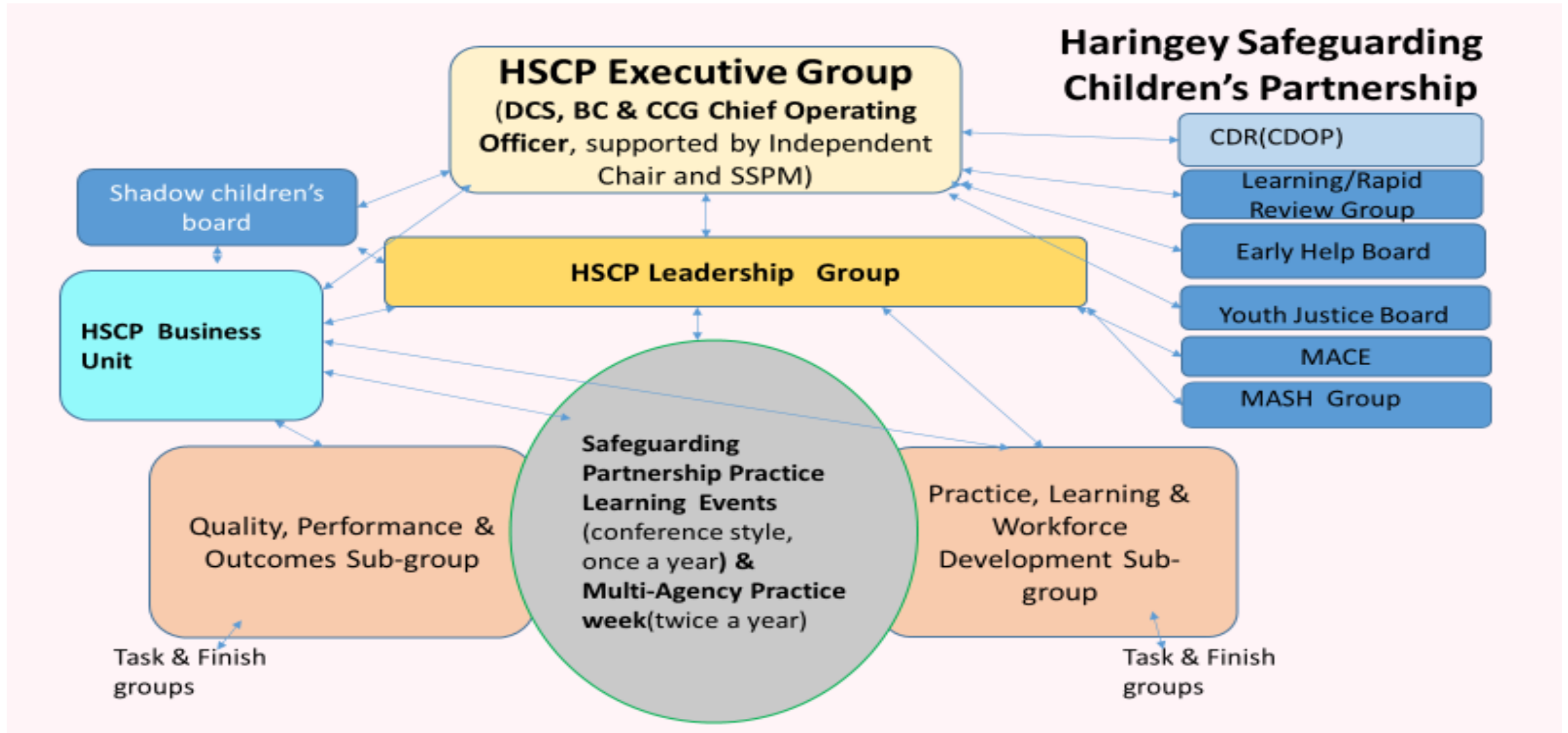


- A focus on partnership practice. The Joint Targeted Area Inspection Dec 2017 found that the,

“effectiveness of partnership working and on the work of individual agencies in Haringey ... practice was ‘too variable’.

The JTAI action plan process helped build stronger relationships and provided constructive challenge to all agencies

Executive Group and Leadership Group



Voice of Children and Young People

- A shadow Children and Young People's Board
- Two Lay members
- Schools are all listed as Relevant Agencies.

Funding

- LA contributes a significantly greater contribution to the budget than all agencies combined.
- LA contributes £165,000
- All other agencies combined contribute £30,000
- Haringey receives the lowest contribution from the CCG across the NCL